



Access to the next generation of ETFs from only **0.05% OGC¹**

CheAper,* SmArter 2.0

Amundi Prime ETF range in a nutshell:

- Must have physically replicated equity & fixed income exposures
- An ultra-low fee starting from just 0.05% OGC¹ for the whole range
- Available on L.S.E, Xetra and Borsa Italiana

ETF Name	Exposure	Dividend policy	ISIN	Tickers	Ongoing charges ¹	
Equity	AMUNDI PRIME GLOBAL UCITS ETF DR - USD (C)	Large & Mid-cap Global equities	Acc	LU2089238203	PRAW GY, PRWU LN	0.05%
	AMUNDI PRIME GLOBAL UCITS ETF DR - USD (D)		Dis	LU1931974692	PR1W GY, PRIW LN, ETFGLO IM	
	AMUNDI PRIME EUROPE UCITS ETF DR - EUR (C)	Large & Mid-cap European equities	Acc	LU2089238039	PRAE GY	0.05%
	AMUNDI PRIME EUROPE UCITS ETF DR - EUR (D)		Dis	LU1931974262	PR1E GY, PRIE LN, ETFEU IM	
	AMUNDI PRIME EUROZONE UCITS ETF DR - EUR (C)	Large & Mid-cap Eurozone equities	Acc	LU2089238112	PRAZ GY	0.05%
	AMUNDI PRIME EUROZONE UCITS ETF DR - EUR (D)		Dis	LU1931974429	PR1Z GY, PRIZ LN, ETFEZ IM	
	AMUNDI PRIME USA UCITS ETF DR - USD (C)	Large & Mid-cap US equities	Acc	LU2089238468	PRAU GY	0.05%
	AMUNDI PRIME USA UCITS ETF DR - USD (D)		Dis	LU1931974858	PR1U GY, PRIU LN, ETFUSA IM	
	AMUNDI PRIME UK MID AND SMALL CAP UCITS ETF DR - GBP (D)	Mid- & Small-cap UK equities	Dis	LU2182388152	PRUK LN	0.05%
	AMUNDI PRIME JAPAN UCITS ETF DR - JPY (C)	Large & Mid-cap Japanese equities	Acc	LU2089238385	PRAJ GY	0.05%
	AMUNDI PRIME JAPAN UCITS ETF DR - JPY (D)		Dis	LU1931974775	PR1J GY, PRIJ LN / PRJU LN, ETFJAP IM	
	Fixed Income	AMUNDI PRIME GLOBAL GOVIES UCITS ETF DR - EUR (C)	Global Developed govies	Acc	LU2089238971	PRAG GY
AMUNDI PRIME GLOBAL GOVIES UCITS ETF DR - EUR (D)		Dis		LU1931975236	PR1G GY, PRIG LN, ETFGG IM	
AMUNDI PRIME EURO GOVIES UCITS ETF DR - EUR (C)		Eurozone govies	Acc	LU2089238898	PRAR GY	0.05%
AMUNDI PRIME EURO GOVIES UCITS ETF DR - EUR (D)			Dis	LU1931975152	PR1R GY, PRIR LN, ETFGOV IM	
AMUNDI PRIME EURO CORPORATES UCITS ETF DR - EUR (C)		Euro IG corporate bonds	Acc	LU2089238625	PRAC GY	0.05%
AMUNDI PRIME EURO CORPORATES UCITS ETF DR - EUR (D)			Dis	LU1931975079	PR1C GY, PRIC LN, ETFCOR IM	
AMUNDI PRIME EURO GOV BONDS 0-1Y UCITS ETF DR (C)		Short term Euro govies	Acc	LU2233156582	PRAB GY	0.05%
AMUNDI PRIME US CORPORATES UCITS ETF DR - USD (C)		US corporate bonds	Acc	LU2089239276	PRAP GY	0.05%
AMUNDI PRIME US CORPORATES UCITS ETF DR - USD (D)			Dis	LU2037749152	PR1P GY, PRUC LN / PRIP LN, ETFUSC IM	
AMUNDI PRIME US TREASURY UCITS ETF DR - USD (C)		US Treasury bonds	Acc	LU2089239193	PRAS GY	0.05%
AMUNDI PRIME US TREASURY UCITS ETF DR - USD (D)			Dis	LU1931975319	PR1S GY, PRIT LN, ETFUST IM	
AMUNDI PRIME US TREASURY BOND 0-1 Y UCITS ETF DR - USD (C)			Acc	LU2182388665	PR1T GY, PR1T LN	0.05%
AMUNDI PRIME US TREASURY BOND 0-1 Y UCITS ETF DR - HEDGED EUR (C)	Short term US Treasury bonds	Acc	LU2182388749	PR1H GY	0.07%	
AMUNDI PRIME US TREASURY BOND 0-1 Y UCITS ETF DR - HEDGED MXN (C)		Acc	LU2182388822	PR1TXN MM	0.08%	

1. Ongoing charges - annual, all taxes included. The ongoing charges represent the charges taken from the fund over a year. Until the fund has closed its accounts for the first time, the ongoing charges are estimated. **Transaction cost and commissions may occur when trading ETFs.**

ABOUT US

Amundi, the leading European asset manager, ranking among the top 10 global players¹, offers its 100 million clients - retail, institutional and corporate - a complete range of savings and investment solutions in active and passive management, in traditional or real assets.

With its six international investment hubs², financial and extra-financial research capabilities and long-standing commitment to responsible investment, Amundi is a key player in the asset management landscape.

Amundi clients benefit from the expertise and advice of 4,700 employees in more than 35 countries. A subsidiary of the Crédit Agricole group and listed on the stock exchange, Amundi currently manages more than €1.7 trillion of assets³.

Amundi was a pioneer in the European ETF market and ranks among the top 5 largest European ETF providers, with €68.1bn⁴ in assets under management. Amundi ETF offers investors a broad range of more than 150 ETFs characterized by continuous innovation and competitive prices.

1. Source: IPE "Top 500 Asset Managers" published in June 2020, based on assets under management as at 31/12/2019
2. Boston, Dublin, London, Milan, Paris and Tokyo
3. Amundi data as at 31/12/2020
4. Source: Amundi ETF - December 2020.

ABOUT SOLACTIVE

Solactive AG is an innovative index provider that focuses on the development, calculation and distribution of tailor-made indices across all asset classes. As at July 2020, Solactive AG served approximately 450 clients in Europe, America and Asia, with approximately USD 200 billion invested in products linked to indices calculated by the company globally, primarily via more than 450 exchange-traded funds from a number of well-known providers. Solactive AG was established in 2007 and is headquartered in Frankfurt.

Main Risks:

Investment in a Fund carries a substantial degree of risk such as Risk of capital loss - Underlying risk - Volatility Risk. Before any investment, please read the detailed descriptions of the main risks in the KIID and prospectus.

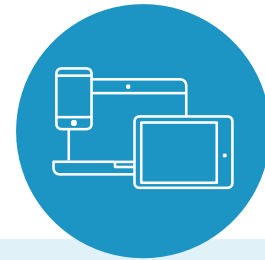
This material is solely for the attention of professional, and eligible counterparties, as defined in Directive MIF 2014/65/EU of the European Parliament acting solely and exclusively on their own account, or Institutional, and acting exclusively on their own account. This document is not intended for citizens or residents of the United States of America or to any «U.S. Person», as this term is defined in SEC Regulation S under the U.S. Securities Act of 1933 and included in the prospectus of the following funds. Promotional and non-contractual information which should not be regarded as an investment advice or an investment recommendation, a solicitation of an investment, an offer or a purchase. Before any subscription, the potential investor must read the offering documents of the funds approved by the Commission de Surveillance du Secteur Financier of Luxembourg for the sub-funds of the Luxembourg Sicav Amundi Index Solutions (all together the "Funds"), including the KIID, available on amundi.com or amundiETF.com or upon request from the headquarters of the Sicav. Some of the Funds mentioned in this document may not be authorized for distribution in your country.

The funds are neither sponsored, approved nor sold by the index providers. The index providers do not make any declaration as to the suitability of any investment. A full description of the indices is available from the providers. Transaction cost and commissions may occur when trading ETFs. The policy regarding portfolio transparency and information on the funds' assets are available on amundiETF.com. Indicative net asset value is published by stock exchanges. The Funds' units purchased on the secondary market cannot usually be sold directly back to the Funds. Investors must buy and sell units on a secondary market with the assistance of an intermediary (e.g. a stockbroker) and may incur fees for doing so. In addition, investors may pay more than the current net asset value when buying units and may receive less than the current net asset value when selling them. It is the investor's responsibility to make sure his/her investment is in compliance with the applicable laws she/he depends on, and to check if this investment is matching his/her investment objective with his/her patrimonial situation (including tax aspects). This Document was not reviewed, stamped or approved by any Financial Authority. Information reputed exact as of **September 2020**. Reproduction prohibited without the written consent of the Management Company. Amundi Asset Management (Amundi AM): French "Société par Actions Simplifiée" (SAS) with a capital stock of €1 086 262 605; Portfolio management company approved by the French Financial Markets Authority (Autorité des Marchés Financiers or "AMF") under no.GP 04000036. Head office: 90, boulevard Pasteur, 75015 Paris, France. Postal address: 90, boulevard Pasteur, CS 21564, 75730 Paris Cedex 15, France. "Amundi Index Solution", a Luxembourg SICAV, RCS B206810, located 5, allée Scheffer, L-2520 Luxembourg. The sub-funds were approved for public distribution in Luxembourg by the Commission de Surveillance du Secteur Financier of Luxembourg.

Notice to residents of France: Before any subscription, the potential investor must read the offering documents of the Luxembourg Amundi Index Solutions sub-funds approved by the Commission de Surveillance du Secteur Financier of Luxembourg, including the KIID, available in French on amundi.com or amundiETF.com or upon request from the headquarters of the Sicav or free of charge from CACEIS Bank au 1-3, place Valhubert, 75013 Paris, France, acting as its Paying Agent in France.

Spain: This material is intended solely to institutional investors, professional, qualified or sophisticated and to distributors. Amundi Iberia SGIC, SAU, principal distributor, supervised by the Spanish CNMV and registered with the No. 31, with address at Paseo de la Castellana nº 1, 28046 Madrid, Spain. The Amundi Prime ETF Funds are part of the AIS Sicav registered in the CNMV with the number 1495.

The legal documentation of the Funds is available in Spanish on the web page amundi.com.



Find out more on
www.amundiETF.com
or on Bloomberg
ETFA<GO>

Contact us
info@amundiETF.com

Capital Markets
capitalmarkets@amundi.com
+33 1 76 33 93 06

Sweden: The Funds have been registered into Sweden pursuant to the Swedish Securities Funds Act (as amended) (Sw. lag (2004:46) om värdepappersfonder), implementing the UCITS IV Directive and may accordingly be distributed to Swedish investors. The Key Investor Information Document ("KIID") (in Swedish) and the prospectuses for the Funds, as well as the annual and semi-annual reports are also available from the Swedish paying agent free of charge. The name and details of the Swedish paying agent are: Skandinaviska Enskilda Banken BANKEN AB (publ) through its entity Transaction Banking, SEB Merchant Banking, with its principal offices at Kungsträdgårdsgatan 8, 106 40 Stockholm, Sweden.

Switzerland: Amundi Suisse SA is distributing in Switzerland and from Switzerland the collective investment schemes managed by Amundi and/or Amundi Luxembourg. In this respect, Amundi Suisse SA informs investors that it collects, from Amundi and/or Amundi Luxembourg, a compensation under article 34 al. 2bis in the Ordinance on collective investment schemes (Ordonnance sur les Placements Collectifs de Capitaux or "OPCC"). This compensation can constitute a part of the management fees stated in the prospectus. Additional information regarding the existence, nature and calculation method for the compensation received by Amundi Suisse SA within the frame of its distribution activity in Switzerland or from Switzerland may be provided upon written request to Amundi Suisse SA, 6-8 rue de Candolle, 1205 Genève, Switzerland. These Funds, (collective investment schemes) authorized by the Luxembourg Commission de Surveillance du Secteur Financier, have not been approved by the FINMA.

These Funds are available in Switzerland for distribution exclusively to Qualified Investors, as defined in the Collective Investment Schemes Act of 23 June 2006, as amended ("CISA") and its implementing ordinance.

The KIID, Prospectus, annual and/or semi-annual reports relating to these Funds are available in Switzerland by the Swiss representative and/or authorised distributors to Qualified Investors. The legal documentation of the Funds can be obtained free of charge from the representative in Switzerland.

Swiss Representative: CACEIS (Switzerland) SA, Route de Signy 35, 1260 Nyon, Switzerland. Paying Agent: CACEIS Bank Luxembourg, Luxembourg, Nyon Branch, Route de Signy 35, 1260 Nyon, Switzerland.

United Kingdom: Funds referred to above are recognised collective investment schemes for the purposes of the Financial Services and Markets Act 2000 of the United Kingdom (the "Act"). This document is being issued inside the United Kingdom by Amundi Asset Management which is authorised by the AMF under number GP04000036 and subject to limited regulation by the Financial Conduct Authority ("FCA") for the conduct of investment business in the UK under number 401883 with its registered office at 41 Louthbury, London EC2R 7HF, England. This document is only directed at persons who are professional clients or eligible counterparties for the purposes of the FCA's Conduct of Business Sourcebook. The investments described herein are only available to such persons and this document must not be relied or acted upon by any other persons. This document may not be distributed to any person other than the person to whom it is addressed without the express prior consent of Amundi Asset Management. Details about the extent of regulation by the FCA are available on request.

***Source Amundi: Comparison based on the ongoing charges (OGC) of equivalent "core" ETF ranges available in Europe. Data from Bloomberg as of February 2021. Important: some individual Funds may not be cheaper than their European peers or may not have an equivalent to compare with and vice versa. Analysis excluding third party commissions/costs incurred directly by investors when trading.**