



# Access to the next generation of ETFs at only **0.05% OGC**<sup>1</sup>

CheAper\*, SmArter 2.0

## Amundi Prime ETF range in a nutshell:

- Must have physically replicated equity & fixed income exposures
- Single OGC<sup>1</sup> of 0.05% for the whole range
- Available on L.S.E, Xetra and Borsa Italiana

In partnership with



ETF Name	Exposure	Dividend policy	ISIN Code	Listing codes	Ongoing charges <sup>1</sup>
<b>Equity</b>					
<b>AMUNDI PRIME GLOBAL</b> UCITS ETF DR	Large & mid-cap Global equities	Distribution	LU1931974692	PR1W GY PR1W LN ETFGLO IM	0.05%
<b>AMUNDI PRIME EUROZONE</b> UCITS ETF DR	Largest Eurozone equities	Distribution	LU1931974429	PR1Z GY PR1Z LN ETFEZ IM	0.05%
<b>AMUNDI PRIME EUROPE</b> UCITS ETF DR	Large & mid-cap European equities	Distribution	LU1931974262	PR1E GY PR1E LN ETFEU IM	0.05%
<b>AMUNDI PRIME USA</b> UCITS ETF DR	Large & mid-cap US equities	Distribution	LU1931974858	PR1U GY PR1U LN ETFUSA IM	0.05%
<b>AMUNDI PRIME JAPAN</b> UCITS ETF DR	Large & mid-cap Japanese equities	Distribution	LU1931974775	PR1J GY PR1J LN ETFJAP IM	0.05%
<b>Fixed Income</b>					
<b>AMUNDI PRIME GLOBAL GOVIES</b> UCITS ETF DR	Global Developed govies	Distribution	LU1931975236	PR1G GY PR1G LN ETFGG IM	0.05%
<b>AMUNDI PRIME EURO GOVIES</b> UCITS ETF DR	Eurozone govies	Distribution	LU1931975152	PR1R GY PR1R LN ETFGOV IM	0.05%
<b>AMUNDI PRIME EURO CORPORATES</b> UCITS ETF DR	Euro IG corporate bonds	Distribution	LU1931975079	PR1C GY PR1C LN ETFCOR IM	0.05%
<b>AMUNDI PRIME US TREASURY</b> UCITS ETF DR	US Treasury bonds	Distribution	LU1931975319	PR1S GY PR1S LN ETFUST IM	0.05%

## Countries of registration:

France, Germany, Ireland, Italy, Netherlands, Spain, UK, Austria, Finland, Sweden, Luxembourg, Switzerland (for qualified investors only).

<sup>1</sup> Ongoing charges - annual, all taxes included. The ongoing charges represent the charges taken from the fund over a year. Until the fund has closed its accounts for the first time, the ongoing charges are estimated. **Transaction cost and commissions may occur when trading ETFs.**

## ABOUT US

Amundi is Europe's largest asset manager by assets under management and ranks in the top 10<sup>1</sup> globally. It manages 1.425 trillion<sup>2</sup> euros of assets across six main investment hubs<sup>3</sup> and provides retail, institutional and corporate clients with innovative investment strategies and solutions tailored to their needs.

Amundi offers its clients in Europe, Asia-Pacific, the Middle East and the Americas a wealth of market expertise and a full range of capabilities across the active, passive and real assets investment universes.

Amundi was a pioneer in the European ETF market and ranks among the top 5 largest European ETF providers, with €38.6bn<sup>4</sup> in assets under management. Amundi ETF offers investors a broad range of more than 120 ETFs characterized by continuous innovation and competitive prices.

1. Source IPE "Top 400 asset managers" published in June 2018 and based on AUM as of end December 2017.

2. Amundi figures as of December 31, 2018.

3. Investment hubs: Boston, Dublin, London, Milan, Paris and Tokyo.

4. Source: Deutsche Bank Global ETF Annual Review - 28/01/2019.

## ABOUT SOLACTIVE

Solactive AG is an innovative index provider that focuses on the development, calculation and distribution of tailor-made indices across all asset classes. As at January 2019, Solactive AG served approximately 400 clients in Europe, America and Asia, with approximately USD 200 billion invested in products linked to indices calculated by the company globally, primarily via 380 exchange-traded funds from a number of well-known providers. Solactive AG was established in 2007 and is headquartered in Frankfurt.

## Main Risks:

Investment in a Fund carries a substantial degree of risk such as Risk of capital loss - Underlying risk - Volatility Risk. Before any investment, please read the detailed descriptions of the main risks in the KIID and prospectus.

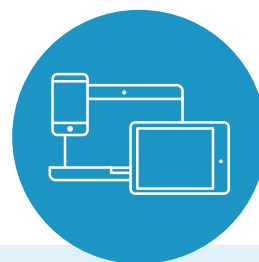
This material is solely for the attention of professional, and eligible counterparties, as defined in Directive MIF 2014/65/EU of the European Parliament acting solely and exclusively on their own account, or Institutional, and acting exclusively on their own account. This document is not intended for citizens or residents of the United States of America or to any «U.S. Person», as this term is defined in SEC Regulation S under the U.S. Securities Act of 1933 and included in the prospectus of the following funds. Promotional and non-contractual information which should not be regarded as an investment advice or an investment recommendation, a solicitation of an investment, an offer or a purchase. Before any subscription, the potential investor must read the offering documents of the funds approved by the Commission de Surveillance du Secteur Financier of Luxembourg for the sub-funds of the Luxembourg Sicav Amundi Index Solutions (all together the "Funds"), including the KIID, available on [amundi.com](http://amundi.com) or [amundi@amundi.com](mailto:amundi@amundi.com) or upon request from the headquarters of the Sicav. Some of the Funds mentioned in this document may not be authorized for distribution in your country.

The funds are neither sponsored, approved nor sold by the index providers. The index providers do not make any declaration as to the suitability of any investment. A full description of the indices is available from the providers. Transaction cost and commissions may occur when trading ETFs. The policy regarding portfolio transparency and information on the funds' assets are available on [amundi.com](http://amundi.com). Indicative net asset value is published by stock exchanges. The Funds' units purchased on the secondary market cannot usually be sold directly back to the Funds. Investors must buy and sell units on a secondary market with the assistance of an intermediary (e.g. a stockbroker) and may incur fees for doing so. In addition, investors may pay more than the current net asset value when buying units and may receive less than the current net asset value when selling them. It is the investor's responsibility to make sure his/her investment is in compliance with the applicable laws she/he depends on, and to check if this investment is matching his/her investment objective with his/her patrimonial situation (including tax aspects). This Document was not reviewed, stamped or approved by any Financial Authority. Information reputed exact as of **March 2019**. Reproduction prohibited without the written consent of the Management Company. Amundi Asset Management (Amundi AM): French "Société par Actions Simplifiée" (SAS) with a capital stock of €1 086 262 605; Portfolio management company approved by the French Financial Markets Authority (Autorité des Marchés Financiers or "AMF") under no.GP 04000036. Head office: 90, boulevard Pasteur, 75015 Paris, France. Postal address: 90, boulevard Pasteur, CS 21564, 75730 Paris Cedex 15, France. "Amundi Index Solution", a Luxembourg SICAV, RCS B206810, located 5, allée Scheffer, L-2520 Luxembourg. The sub-funds were approved for public distribution in Luxembourg by the Commission de Surveillance du Secteur Financier of Luxembourg.

**Notice to residents of France:** Before any subscription, the potential investor must read the offering documents of the Luxembourg Amundi Index Solutions sub-funds approved by the Commission de Surveillance du Secteur Financier of Luxembourg, including the KIID, available in French on [amundi.com](http://amundi.com) or [amundi@amundi.com](mailto:amundi@amundi.com) or upon request from the headquarters of the Sicav or free of charge from CACEIS Bank au 1-3, place Valhubert, 75013 Paris, France, acting as its Paying Agent in France.

**Spain:** This material is intended solely to institutional investors, professional, qualified or sophisticated and to distributors. Amundi Iberia SGIC, SAU, principal distributor, supervised by the Spanish CNMV and registered with the No. 31, with address at Paseo de la Castellana nº 1, 28046 Madrid, Spain. The Amundi Prime ETF Funds are part of the AIS Sicav registered in the CNMV with the number 1495.

The legal documentation of the Funds is available in Spanish on the web page [amundi.com](http://amundi.com).



Find out more on  
[www.amundi.com](http://www.amundi.com)  
or on Bloomberg  
**ETFA<GO>**

Contact us  
[info@amundi.com](mailto:info@amundi.com)

Capital Markets  
[capitalmarkets@amundi.com](mailto:capitalmarkets@amundi.com)  
**+33 1 76 33 93 06**

**Sweden:** The Funds have been registered into Sweden pursuant to the Swedish Securities Funds Act (as amended) (Sw. lag (2004:46) om värdepappersfonder), implementing the UCITS IV Directive and may accordingly be distributed to Swedish investors. The Key Investor Information Document ("KIID") (in Swedish) and the prospectuses for the Funds, as well as the annual and semi-annual reports are also available from the Swedish paying agent free of charge. The name and details of the Swedish paying agent are: Skandinaviska Enskilda Banken BANKEN AB (publ) through its entity Transaction Banking, SEB Merchant Banking, with its principal offices at Kungsträdgårdsgatan 8, 106 40 Stockholm, Sweden.

**Switzerland:** Amundi Suisse SA is distributing in Switzerland and from Switzerland the collective investment schemes managed by Amundi and/or Amundi Luxembourg. In this respect, Amundi Suisse SA informs investors that it collects, from Amundi and/or Amundi Luxembourg, a compensation under article 34 al. 2bis in the Ordinance on collective investment schemes (Ordonnance sur les Placements Collectifs de Capitaux or "OPCC"). This compensation can constitute a part of the management fees stated in the prospectus. Additional information regarding the existence, nature and calculation method for the compensation received by Amundi Suisse SA within the frame of its distribution activity in Switzerland or from Switzerland may be provided upon written request to Amundi Suisse SA, 6-8 rue de Candolle, 1205 Genève, Switzerland.

These Funds, (collective investment schemes) authorized by the Luxembourg Commission de Surveillance du Secteur Financier, have not been approved by the FINMA.

These Funds are available in Switzerland for distribution exclusively to Qualified Investors, as defined in the Collective Investment Schemes Act of 23 June 2006, as amended ("CISA") and its implementing ordinance.

The KIID, Prospectus, annual and/or semi-annual reports relating to these Funds are available in Switzerland by the Swiss representative and/or authorised distributors to Qualified Investors. The legal documentation of the Funds can be obtained free of charge from the representative in Switzerland.

Swiss Representative: CACEIS (Switzerland) SA, Route de Signy 35, 1260 Nyon, Switzerland. Paying Agent: CACEIS Bank Luxembourg, Luxembourg, Nyon Branch, Route de Signy 35, 1260 Nyon, Switzerland.

**United Kingdom:** Funds referred to above are recognised collective investment schemes for the purposes of the Financial Services and Markets Act 2000 of the United Kingdom (the "Act"). This document is being issued inside the United Kingdom by Amundi Asset Management which is authorised by the AMF under number GP04000036 and subject to limited regulation by the Financial Conduct Authority ("FCA") for the conduct of investment business in the UK under number 401883 with its registered office at 41 Lothbury, London EC2R 7HF, England. This document is only directed at persons who are professional clients or eligible counterparties for the purposes of the FCA's Conduct of Business Sourcebook. The investments described herein are only available to such persons and this document must not be relied or acted upon by any other persons. This document may not be distributed to any person other than the person to whom it is addressed without the express prior consent of Amundi Asset Management. Details about the extent of regulation by the FCA are available on request.

**"Source Amundi: Comparison based on the ongoing charges (OGC) of equivalent "core" ETF ranges available in Europe. Data from Bloomberg as of 31/01/2019. Important: some individual Funds may not be cheaper than their European peers or may not have an equivalent to compare with and vice versa. Analysis excluding third party commissions/costs incurred directly by investors when trading.**